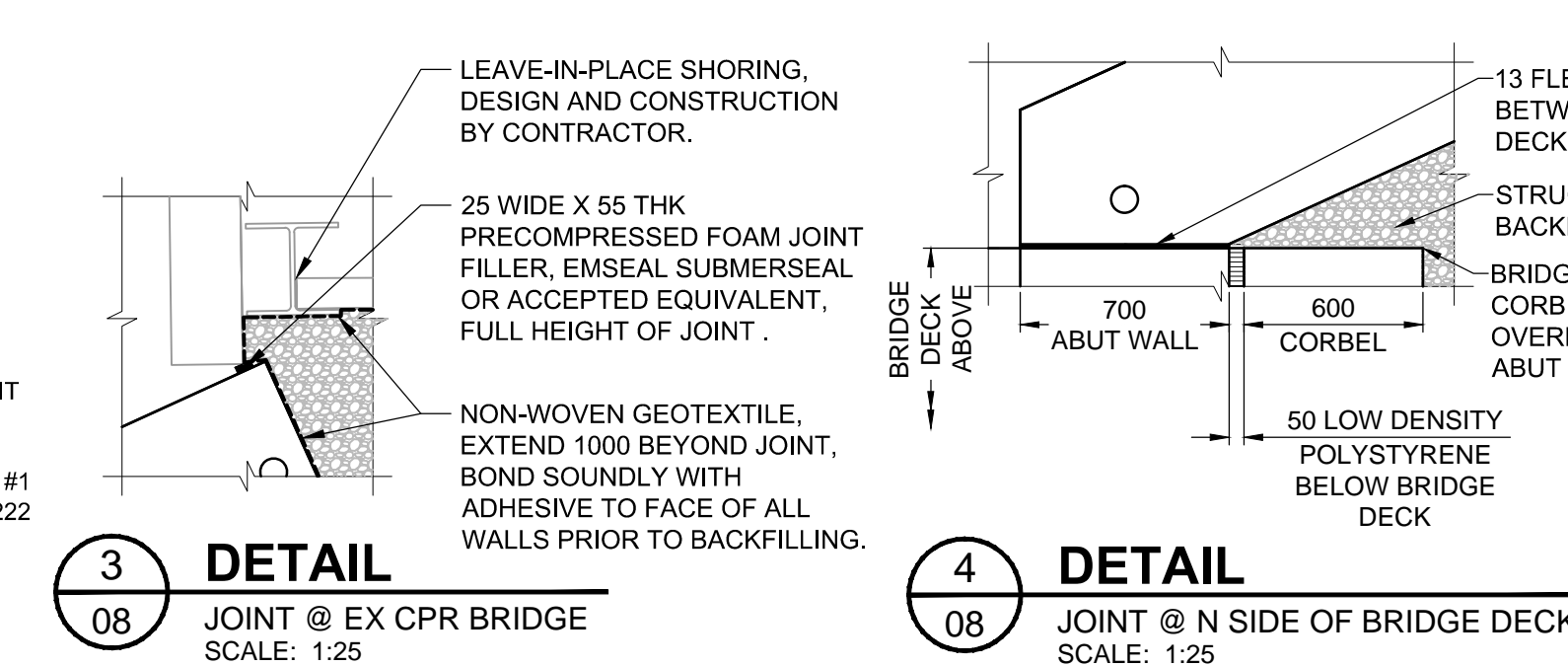
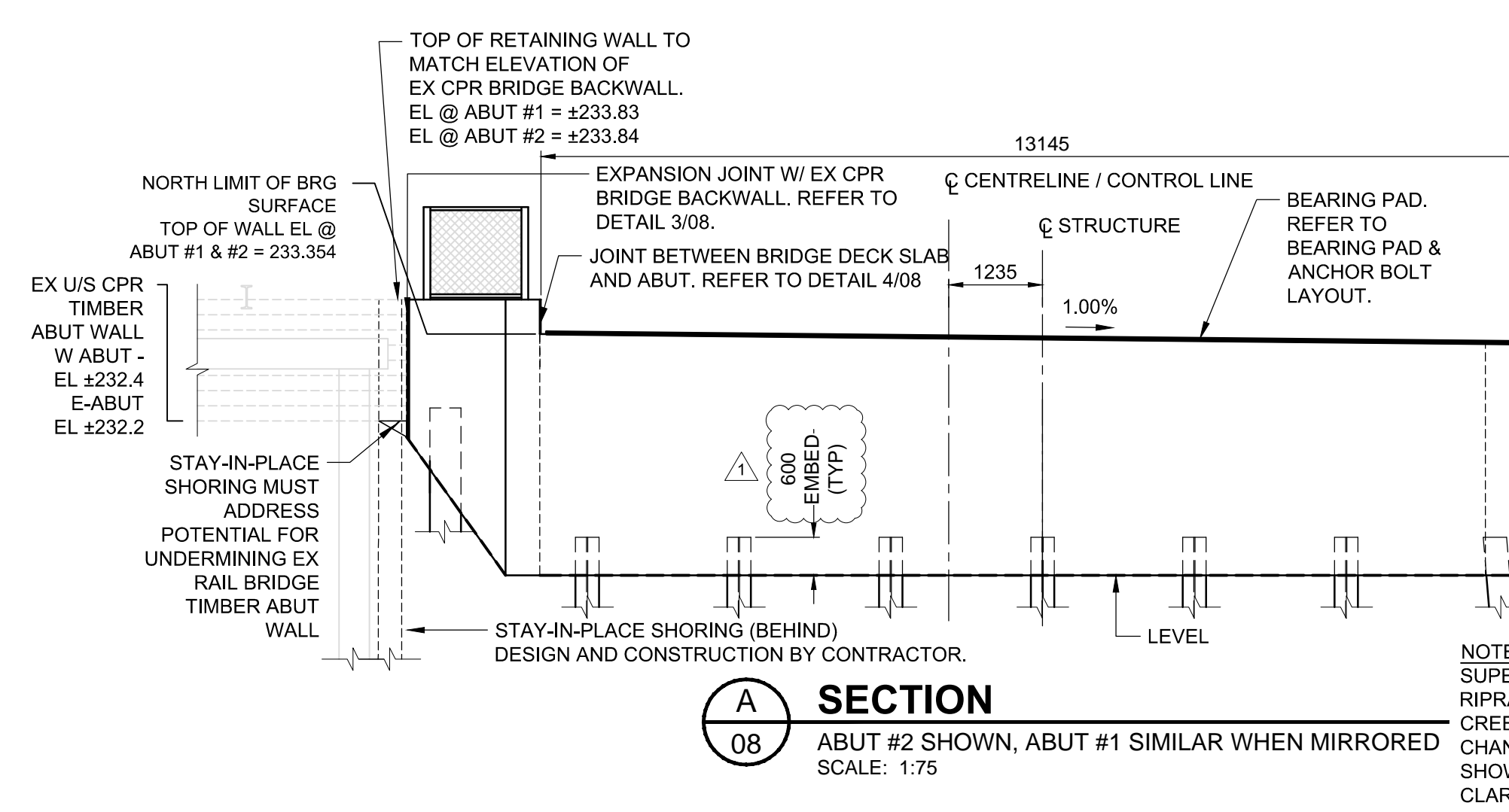
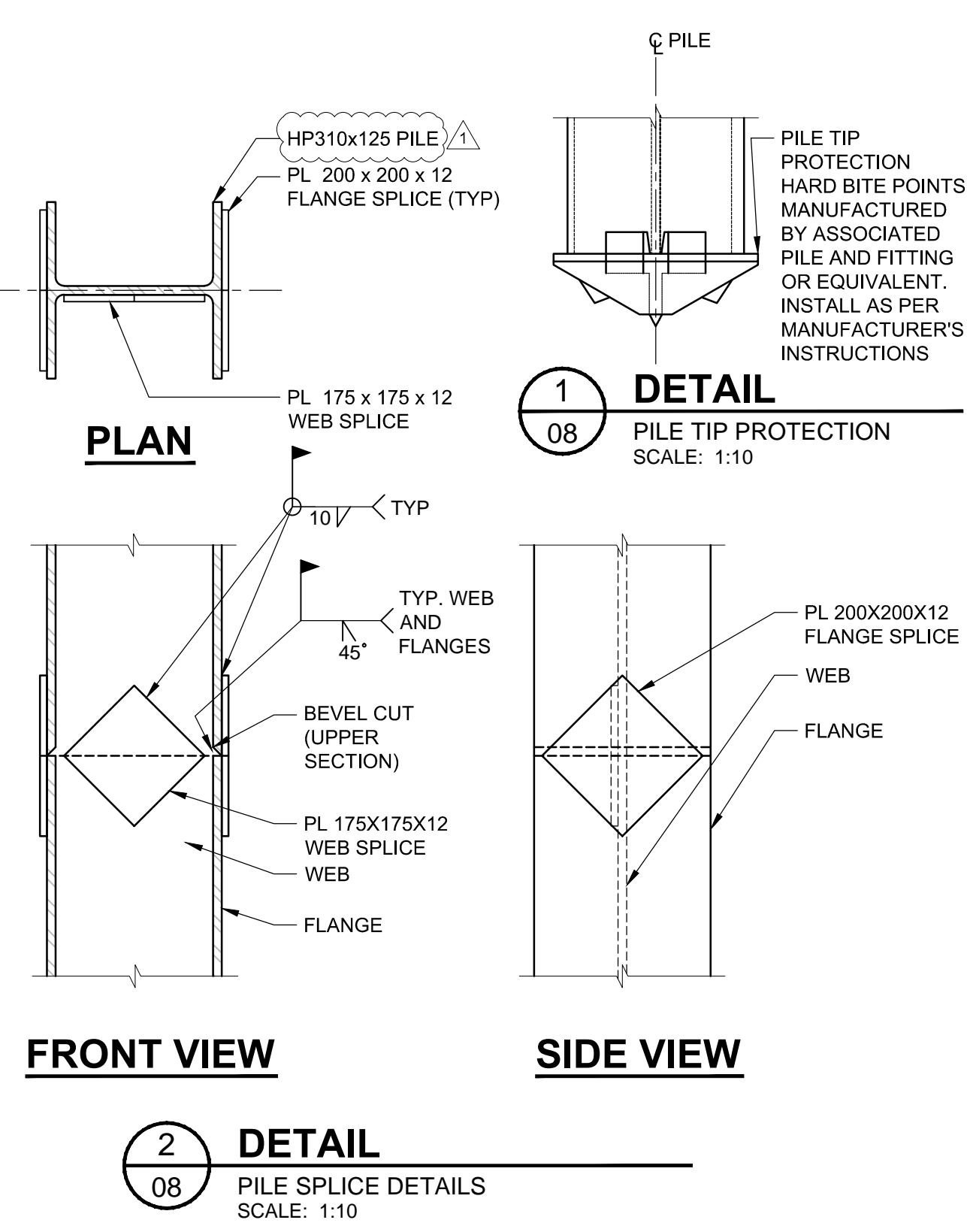


BEARING PLAN & ANCHOR ROD LAYOUT
SCALE 1:75

PILE LENGTH TABLE			
PILE ID	STRAIGHT/BATTERED	CUT-OFF ELEVATION (m)	PILE LENGTH (ESTIMATE) (m)
P1	STR	232.675	17.675
P2	STR	230.775	15.775
P3	STR	230.775	15.775
P4	STR	230.775	15.775
P5	STR	230.775	15.775
P6	STR	230.775	15.775
P7	STR	230.775	15.775
P8	BAT @ 6:1	230.775	15.991
P9	BAT @ 6:1	232.468	17.708
P10	STR	232.468	17.468
P11	STR	232.468	17.468
P12	STR	232.468	17.468
P13	STR	232.500	17.675
P14	STR	230.775	15.775
P15	STR	230.775	15.775
P16	STR	230.775	15.775
P17	STR	230.775	15.775
P18	STR	230.775	15.775
P19	STR	230.775	15.775
P20	BAT @ 6:1	230.775	15.991
P21	BAT @ 6:1	233.000	18.000
TOTAL PILE LENGTH (m):			344.74



- PILE DRIVING NOTES:**
- SUBMIT PROPOSED PILE DRIVING SYSTEM FOR THE CONTRACT ADMINISTRATOR'S REVIEW AND ACCEPTANCE A MINIMUM OF 7 DAYS PRIOR TO UNDERTAKING THE WORK.
 - DRIVE PILES TO PRACTICAL REFUSAL TO THE CRITERIA DETERMINED BY THE CONTRACT ADMINISTRATOR BASED ON THE PILING SYSTEM TO BE USED.
 - OVERHEAD POWER LINES ARE PROXIMATE TO THE WORK. REFER TO SPECIFICATIONS FOR CLEARANCE LIMITATIONS.
 - ESTIMATED REFUSAL DEPTH: 215.0 m
 - PILE INSTALLATION TOLERANCES:
 - HORIZONTAL: ±50 mm MAX
 - CUT-OFF ELEVATION: ±10 mm MAX
 - OUT-OF-PLUMB OR OUT-OF-BATTER LINE: 2% MAX
 - SHOULD PILE LENGTHS REQUIRE SPLICING, SPLICE ACCORDING TO DETAIL 2/08.

LOCATION APPROVED
UNDERGROUND STRUCTURES

APCGM
Certificate of Authorization
MORRISON HERSHFIELD
No. 1736

METRIC
WHOLE NUMBERS INDICATE MILLIMETRES
DECIMALIZED NUMBERS INDICATE METRES

NO.	ISSUED FOR	DATE	BY
1	ISSUED FOR ADDENDUM 1	15/11/10	DAN
0	ISSUED FOR TENDER	15/10/22	DAN
	REVISIONS	YYMMDD	BY

MORRISON HERSHFIELD

DESIGNED BY: DAN
CHECKED BY: SAL
DRAWN BY: DML
APPROVED BY: BE
ACCEPTED BY: ORIGINAL DRAWING SIGNED BY: D.N. BURMEY, P.ENG. DATE: 15/10/22
DATE: 15/04/24

PROFESSIONAL'S SEAL
D.A. NEILSON
ORIGINAL SIGNED 15/10/22 37248
REGISTERED PROFESSIONAL ENGINEER

THE CITY OF WINNIPEG
PUBLIC WORKS DEPARTMENT
ENGINEERING DIVISION

SASKATCHEWAN AVENUE AT OMAND'S CREEK BRIDGE REPLACEMENT

CITY DRAWING NUMBER: B144-16-08
SHEET 08 OF 18
DRAWING No. 08 REV 1